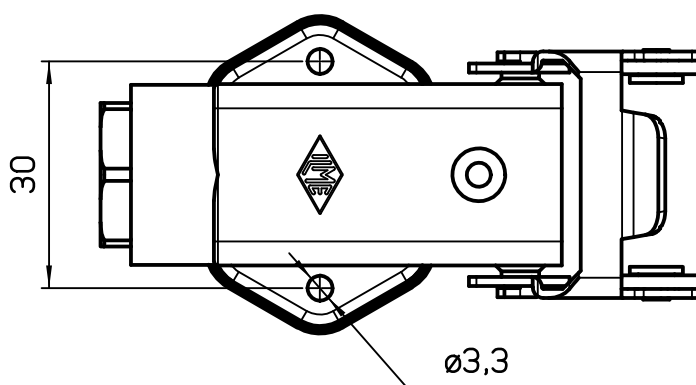
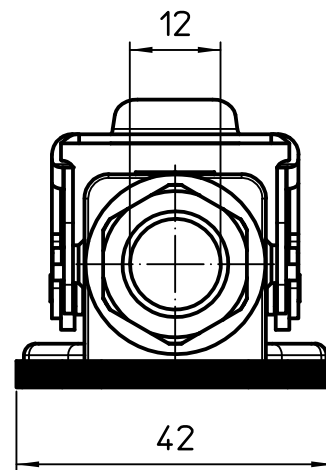
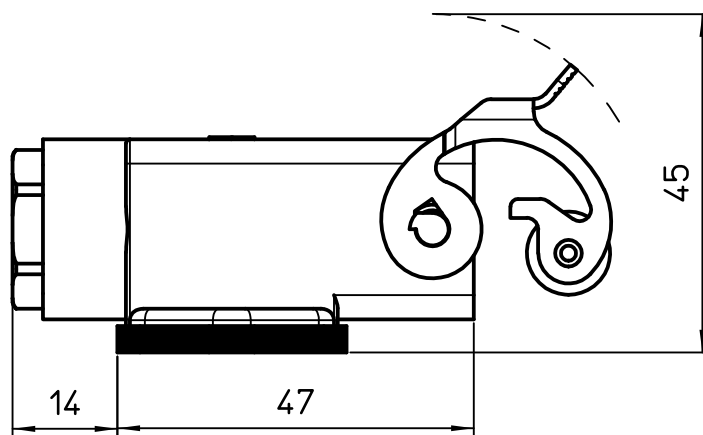
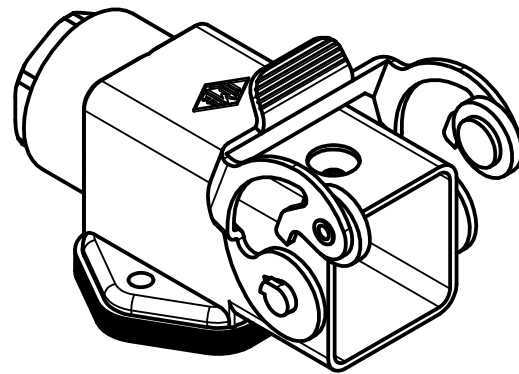
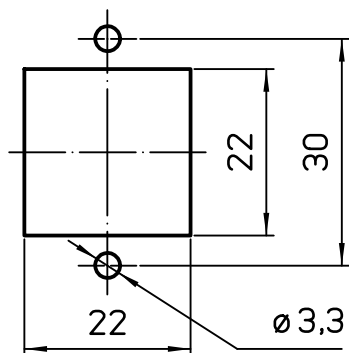


Panel cut-out



Diritti riservati All rights reserved

REV.	DATE	SIGNATURE



Dimensions  
in mm

Simplified representation with dimensions without tolerance

Original Size A4

Date 13/03/23

Sign. G.Renna

CK 03 IAP

Angled bulkhead mounting housing, size "21.21", Pg11 cable entry,  
stainless steel lever, with cable gland

Scale  
1:1

